

**NAUTIC ALLIANCE**

presents the new

# **VOYAGER 45**



**Limited special edition for purchase charter**



Developed for the charter market  
in cooperation with

**YM**  
YACHTEN MELTL  
YACHTCENTRUM

**BAVARIA**  
— — — — —  
YACHTS

# Voyager 45

## TECHNICAL DATA



Length overall incl. bowsprit	14,52 m	47,63 ft
Length hull	13,60 m	44,61 ft
Length waterline	12,92 m	42,38 ft
Beam of hull	4,35 m	14,27 ft
Draught standard	2,18 m	7,15 ft
Ballast standard	3.489 kg	7.691 lb
Displacement with deep keel 2,18 m	12.254 kg	27.015 lb
Engine (standard)	44,13 kW / 60 PS	44,13 kW / 60 hp
Engine (standard)	Volvo D2-60	Volvo D2-60
Fuel tank approx.	180 L	39,6 gal <sup>1)</sup>
Water tanks approx.	180 L + 135 L + 220 L	39,6 gal + 29,7 gal + 48,4 gal <sup>1)</sup>
Sail area total	98,0 m <sup>2</sup>	1069,2 sq.ft
Mainsail (furling mast, without battens)	47,0 m <sup>2</sup>	512,8 sq.ft
Genoa 106%	51,0 m <sup>2</sup>	556,4 sq.ft
Gennaker	148,4 m <sup>2</sup>	1597,3 sq.ft
Mast length (max.) from waterline excl. Windex or antenna	21,20 m	69,55 ft
I	17,51 m	57,44 ft
J	5,51 m	18,07 ft
P	17,19 m	56,39 ft
E	5,55 m	18,20 ft
Cabins	4	4
Head	3	3
Separate shower	1	1
CE category	A10 / B16	A10 / B16
Design	Farr Yacht Design	

<sup>1)</sup> imperial [gal]

All information in this handout is provided without guarantee.

# Voyager 45

## SPECIFICATIONS

### HULL / KEEL

- Hull in hand layup sandwich construction, solid laminat below waterline
- White hull, black stripes
- 8 hull windows, fix
- TruDesign composite skin fittings, corrosion free
- Keel, L-shape, cast iron, deep keel
- 2 rudders with aluminium stock, self-aligning roller bearings
- Bow thruster 100 kgf, electric, incl. operating battery

### DECK

- Deck in hand lay-up sandwich construction, white
- Bowsprit for gennaker or bowsprit with anchor roller
- Cockpit floor, side decks and coach roof with non-slip structure
- Pul- and pushpit in stainless steel
- Guardrail with stanchions in stainless steel
- Deck hatches, openable, 9 x
- 6x portlights, openable in coachroof, 2x portlights, openable in cockpit
- 2x stainless steel handrail on cabin roof
- 2x stainless steel handrail at companion way
- 2x pin stop genoa rails
- 2x padeyes for mainsheet (double sheet system)
- 2x organizers for halyards on deck
- 10x halyardstopper at halyard winches
- 1x halyardstopper for Furllex reefing line
- LFS-Safety-System on deck, padeyes and safety lines on each deck side, fixed to deck

### ANCHOR / MOORING

- Windlass 1500 W, remote control with chain counter at bow
- Delta Anchor 20 kg including galvanized chain 10mm, 75m
- 6x mooring cleats, stainless steel

### DECK FLOORING

- Teak on cockpit benches
- Teak on cockpitfloor
- Teak on bathing platform and helmseats at stern

### WINCHES

- 2x halyard winches, sz 45, self tailing, manual, on cabin roof
- 2x genoa winches sz 50, self tailing, manual, placed aft on cockpit coaming
- 2x winch handles

# Voyager 45

## COCKPIT

- Sliding hatch and companion way doors
- Cockpit locker in benches each side
- Cockpit table with foldable table leaves and storage
- Cockpit cushions on benches, colour "Titanium"
- Storage for gas bottle self-drained
- Cockpit shower
- Mobile sun bed extension for cockpit bench sb incl. upholstery "Titanium"
- B-Box storage at stern. Small storage at transom appr.20l

## BATHING PLATFORM

- Bathing platform with teak, electrically lowerable
- Robust stainless steel bathing ladder

## HOODS

- Sprayhood with handhold, colour "Titanium"
- Bimini, colour "Titanium"

## MAST AND RIGG

- Selden Furling Mast, aluminium, deck stepped
- Maststep with blocks
- Selden Boom,
- Rodkicker, incl. line and blocks for tackle
- Backstay tensioner, mechanical
- Genoa sheets
- Mainsheet, double
- Furlex 304s above deck, incl. reefing line
- Standing rigging, wire 1x19, forestay, backstay with bridle, mechanical backstay adjuster
- Chainplates on hull side, bow and stern
- Genoa, 106%, Cruiseteck, Dacron, crosscut, 51m<sup>2</sup>
- Furling Main, Cruiseteck, no battens, Dacron, crosscut 47m<sup>2</sup>

## NAVIGATION / ENTERTAINMENT / ELECTRONIC

- Navigation lights at bow and stern
- Steaming light
- Anchor light in masttop
- Deck flood light
- Magnetic compass on cockpit table
- Multi function display, B&G Zeus<sup>3</sup>S 9" with integrated GoFree™ Wi-Fi; all-weather touch screen and expanded keypad at cockpit table
- Display, 2 x B&G Triton<sup>2</sup> digital displays in cockpit; B&G Wind vane; DST800 Transducer for speed, depth and temperature

# Voyager 45

## NAVIGATION / ENTERTAINMENT / ELECTRONIC

- VHF, B&G V60 with integrated AIS Receiver + B&G H60 wireless handset
- Autopilot B&G, incl. compass and WR10 wireless remote control
- Radio entertainment system Fusion MS-RA770 Apollo Marine with DAB+ and 2 speakers in salon and 2 speakers in cockpit

## INTERIOR

- 4 cabins, 3 heads with pump toilet, big bowl, 1 separate shower
- "Style" interior.
- Interior wood "Nordic Oak".
- Floor "Elm".
- Worktops on pantry and in head: mineral composite "Canvas Mist"
- Coloured covers, sand grey, at salon upper lockers sb, and pantry upper lockers ps.
- Upholstery in salon "Heritage Cement"
- Comfort mattresses in each cabin
- Blinds incl. mosquito nets at each deck flush hatch
- Blinds on side windows and panoramic windows

### Front cabins

- Separated by "Flex Bulkhead System" which allows to convert the 2 front cabins into one big front cabin.
- Front cabins, each with big cabinet locker and upper lockers below deck.
- Comfortable size of bed.
- Reading lights with USB charging in each cabin.
- Spacious head with pump toilet, big bowl size, worktop "Canvas Mist", storage lockers, on sb side.
- Separate shower ps. Head and shower with wooden style grating.
- Both also reachable from salon side

### Salon

- Companionway with modern appearance.
- Ceiling and mast bulkhead, covered elements with artificial leather, white.
- Stainless steel handhold at ceiling
- Salontable with integrated charttable
- LED lighting and ambient lights

### Equipment Galley

- LPG gas system with locker (for 1 bottle) and gas stove with oven
- Cooler with compressor 147 L incl. mesh basket inside
- Double stainless steel sink
- Drawer-fridge, 2 drawers, incl. freezer, 160 l

# Voyager 45

## INTERIOR DESIGN

- Heads with toilet and shower combined for saloon and aft cabins
- Spacious heads, with pump toilet, big bowl size, worktop "Canvas Mist"
- Storage lockers, gratings for heads and shower
- 2 Aft cabins, each with big cabinet and comfortable bed size
- Reading lights with USB charging in each cabin

## SYSTEMS WATER INTERIOR

### Fresh water

- Electrical fresh water pump
- 3 watertanks (135l, 180l, 220l) together 535l freshwater
- Warm water maker 40l (showers and taps)

### Greywater

- Goes to sea either by gravity or discharge pump (showers)

### Sanitary

- Seawater, pump toilets, big bowl size, with blackwater tank appr. 70l. Discharge of tank via deck nozzle or skin valve fitting to sea.

### Bilge pumps

- Electrical and manual bilge pump

## SYSTEMS ELECTRICAL

- 12 VDC System
- 12 V Panel with fuses and display for tank monitoring and state of batteries.
- 3x service battery 95 Ah, 12 V, AGM
- 1x engine battery 70 Ah, 12V, AGM
- Charger for batteries 70 A
- Shore power 230 VAC, 16 A
- Sockets in each cabin

## SYSTEMS HEATING

- Hot air heater 5.5kW
- Exits in salon and fwd cabins

## PROPULSION

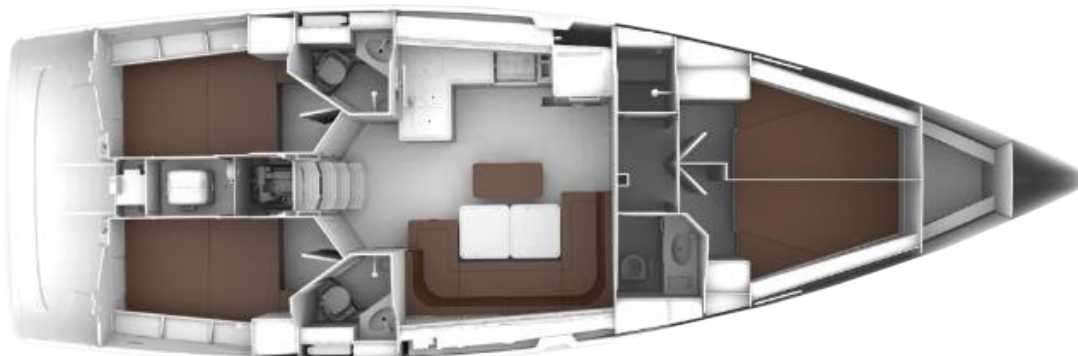
- Diesel engine 60 hp, sail drive
- Engine panel
- Fuel indicator
- Propeller, 3 blade, fix, 17x15x3



# Voyager 45

## SPECIFICATIONS

### LAYOUT



### COLOR CONCEPT

#### HULL



Hull White  
(RAL 9016)



Stripe Jet Black  
(Pantone 426)

#### DECKING



On Side decks &  
Cockpit Floor



Cockpit seating &  
Bathing Platform

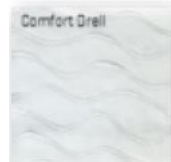
#### SPRAYHOOD & BIMINI



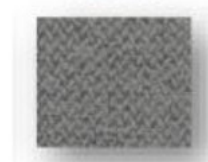
#### UPHOLSTERY



#### MATTRES



#### UPHOLSTERY



#### WOOD



Nordic oak

#### HATCHES



Sand grey

#### WORKTOPS



Canvas Mist

#### FLOOR



Elm

# Voyager 45

## ADVANTAGES

The **BAVARIA Voyager 45** has everything today's charter customers expect. Perfectly and fully equipped, robust and ready for the toughest conditions.

### Your benefits at a glance:

- 100% made in Germany – since 1978
- Top quality, sophisticated comfort & maximum robustness
- Intelligent cabin layout with many storage solutions
- Easy to maintain & durable
- Excellent spare parts and service structure – exclusively for BAVARIA partners
- A price-performance ratio that sets standards

## HIGHLIGHTS / ADDITIONAL EQUIPMENT

Additional equipment is already included in the price.

- ✓ Bright & innovative interior
- ✓ Comfort mattresses in all cabins
- ✓ Flexible bulkhead system in the bow – convertible from 4 to 3 cabins
- ✓ Radio (Fusion Entertainment System)
- ✓ Stainless steel refrigerator with 2 drawers + top loader
- ✓ New control panel in the salon with display
- ✓ Lounger extension in the cockpit
- ✓ Cockpit cushions for bench seats and sun beds
- ✓ Suitable for regattas thanks to bowsprit
- ✓ Genoa winches at the helm
- ✓ More powerful anchor winch 1,500 W with 75 m anchor chain
- ✓ Bow thruster
- ✓ Large water tank 535 l
- ✓ Upgrade battery charger to 70A
- ✓ Solar panel, BOS power management
- ✓ B-Box for snorkeling equipment & flip flops
- ✓ Improved drive of the bathing platform
- ✓ Teak in the cockpit & on the bathing platform





# Voyager 45

## AVAILABLE FOR PURCHASE CHARTER



The yacht is not available for general sale; it is exclusively offered as part of the Charter Management Program of the **Nautic Alliance fleet** – represented by Pitter Yachtcharter, Sun Charter, and Noa Yachting – and through Yachten Meltl for B2B charter operations.

## BASE LOCATIONS

As an owner, you benefit from the strong network of the Nautic Alliance. Your Voyager 45 can be stationed at the following bases across the Mediterranean and Northern Europe:

- ✓ **Croatia:** Pula (Polesana & Veruda), Biograd, Murter (Jezera & Hramina), Trogir, Kaštela
- ✓ **Greece:** Corfu, Lefkas, Volos
- ✓ **Italy:** Sardinia, Elba, Tropea, Castellammare di Stabia
- ✓ **Türkiye:** Göcek
- ✓ **Spain:** Palma de Mallorca
- ✓ **Netherlands:** Lelystad on the IJsselmeer

## CONTACT & FURTHER INFORMATION

Receive detailed information about the **Voyager 45** in the charter management program by Pitter Yachtcharter. Our expert team will be happy to advise you on equipment, specifications, and your individual investment options.

Request information now at [info@nauticalliance.com](mailto:info@nauticalliance.com)



**NAUTIC ALLIANCE**

